

INVEST IN LIVERPOOL CITY REGION



NOW IS THE TIME TO TAKE A LOOK AT LIVERPOOL CITY REGION.

We are evolving at an incredible speed: **exploring** new markets, **developing** new technologies, **pioneering** new ways to do business. We **attract** and retain the **brightest** and best talent.

We're a city in the right place, at the right time. How can we inspire your business to move to the next level?

WELCOME TO A PLACE READY FOR BUSINESS

Our invest team is committed to growing your business. As part of our services, we offer a broad portfolio of support to companies interested in growing or establishing their business in Liverpool City Region. Our services include:

- Dedicated account manager to support your project
- Bespoke research intelligence
- Advice on availability and costs of commercial property and soft landing schemes
- Introductions to business support organisations and guidance on financial incentives
- Introductions to business networks and professionals
- Introductions to research and technology expertise
- Information on staff recruitment and training
- Organising and hosting briefing visits for key staff
- Maximising PR associated with your investment
- Dedicated aftercare account manager, linking you with public sector support services, and providing bespoke business development services.
- Access to our Liverpool in London office.

For further information and support email:

investliverpool@liverpool.gov.uk.

We look forward to working on your plans with you.



ADVANCED
ENGINEERING &
MANUFACTURING



HOME TO
JAGUAR LAND ROVER
AND BAC MONO

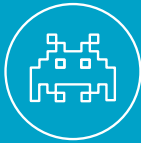


DIVERSE MIX OF OEMs,
TIER 1s, TIER 2s, AND
WIDER SUPPLY CHAIN



BENTLEY, GM
TOYOTA AND PACCAR
WITHIN 1 HOUR DRIVE

CREATIVE & DIGITAL



SECOND FASTEST
GROWING TECH
CLUSTER IN THE UK



VIDEO GAMING
CENTRE OF
EXCELLENCE



UK HUB FOR HIGH
PERFORMANCE COMPUTING
AND BIG DATA

ENERGY &
ENVIRONMENT



DESIGNATED CENTRE
FOR OFFSHORE RENEWABLE
ENGINEERING



1,400 LOW CARBON
BUSINESSES, **22,000**
EMPLOYED IN SECTOR



WORLD'S SECOND
LARGEST WIND FARM
IN LIVERPOOL BAY

VISITOR ECONOMY



DESIGNATED
UNESCO WORLD
HERITAGE SITE



ROUGH GUIDE'S 'TOP
GLOBAL CITIES TO VISIT'
AND **4TH** 'FRIENDLIEST
CITY IN THE WORLD'



LARGEST COLLECTION OF
MUSEUMS AND GALLERIES
OUTSIDE LONDON

LIFE SCIENCES



LIFE SCIENCES
WORTH IN EXCESS OF
£1.7 BILLION PER ANNUM



A LEADING EUROPEAN
BIOMANUFACTURING
CLUSTER



ONE OF THE UK'S
TOP THREE
BIOMEDICAL CENTRES

KNOWLEDGE



LIVERPOOL CATCHMENT-
12 UNIVERSITIES, OVER
210,000 STUDENTS



CUTTING EDGE TECH
AND R & D, No1 IN THE
NORTH OF ENGLAND
FOR BUSINESS INNOVATION



HOME TO WORLD CLASS
RESEARCH CENTRES OF
EXCELLENCE AND FACILITIES

PORT & LOGISTICS



£1 BILLION
INVESTMENT IN
INFRASTRUCTURE



£300 MILLION LIVERPOOL2
DEEP WATER TERMINAL TAKES
95% OF WORLD'S LARGEST SHIPS



HOME TO 4 OF
THE WORLD'S TOP
6 SHIPPING LINES

TRANSFORMATIONAL



INTERNATIONAL
FESTIVAL FOR
BUSINESS 2018



£10 BILLION LIVERPOOL
& WIRRAL WATERS MIXED
USE DEVELOPMENT



£1 BILLION
LIVERPOOL ONE
RETAIL DEVELOPMENT

FINANCIAL,
PROFESSIONAL &
BUSINESS SERVICES



LEADING UK CENTRE FOR ASSET
AND WEALTH MANAGEMENT
OUTSIDE LONDON



DESIGNATED
FINANCIAL CENTRE
OF EXCELLENCE



500,000 BUSINESSES
WITHIN 1 HOUR
OF THE CITY CENTRE

CONNECTIVITY



2 MAJOR
AIRPORTS WITHIN
45 MINUTES DRIVE



2 HOURS
JOURNEY TIME
TO LONDON



10 MOTORWAYS WITHIN
10 MILES OF LIVERPOOL2 AND
10 RAIL LINKED TERMINALS

ADVANCED ENGINEERING & MANUFACTURING



KEY FACTS



The City Region has **50,000** people working in the automotive sector.



ONE OF UK'S LARGEST concentration of manufacturers and suppliers within two hours of plants producing **700,000** vehicles a year.



Land and property costs lower compared to West Midlands; production space in Liverpool available for **£4.50 - £6.00 sq ft**.



INDUSTRY 4.0 EXEMPLAR REGION.



Strong clusters of activity in Aerospace, Marine, Chemicals, Biotechnology, Energy, and Food & Drink.

Liverpool's automotive industry is firing on all cylinders. The city region is home to a 50,000-strong skilled automotive workforce, working around the clock on some of the world's most in-demand models.

Not only are we home to Jaguar Land Rover, producing the Range Rover Evoque and Discovery Sport models, we're located within two hours of plants producing 700,000 vehicles per year. Also based in Liverpool are Supercar makers, BAC, who produce the Mono, a light weight, ultra-high performance supercar designed and manufactured using the latest racing technology.

The city region's supply chain features companies such as Johnson Controls, IAC, Magna, Pilkington, HP Chemie Pelzer and NGF. From conception to the open road, Liverpool is a centre of excellence in all things automotive.

Across Liverpool City Region and wider North West there are strong clusters of activity in Aerospace, Marine, Chemicals, Biotechnology, Energy and Food & Drink. You will find a diverse range of industry networks that bring global OEMs together with supply-chain companies, university research institutes and government agencies in a collaborative way.

Sensors, big data and robotics are transforming the way we make things. Liverpool City Region is an exemplar region in the UK leading on Industrial Internet of Things and Industry 4.0. Key industry assets include Sensor City, The Hartree Centre, Virtual Engineering Centre, Engineering and Technology Research Institute and the new Manufacturing Technology Centre. This provides the opportunity for companies to collaborate and partner with this world-class infrastructure.

BAC MONO

Beautiful, distinctive and desirable - the BAC Mono brings Formula racing technology to the open road. It represents classic British sports car manufacturing at its very best. And it's made right here.

"IT'S ONLY NATURAL WE'D LOOK TO LIVERPOOL - WE KNOW THE HISTORY OF CAR MAKING IN THIS CITY.

"And for us, the partnership has been fantastic, from day one. The level of support actually took us by surprise. Appointments were made, tours of prospective sites set up, doors opened for us in record time. We found the perfect building on our first visit. And, since then, the bonds have grown even stronger.

"The close collaboration between us and the city has helped get the message out that we're a good company, with credibility. And the value of that, for a young company, is immeasurable.

"Also, it's great that we sit in the heart of a cluster of a world class automotive supply chain."

Ian Briggs

Design Director, Co-founder, BAC Mono

BUSINESS SERVICES



KEY FACTS



LARGEST wealth management centre outside London.



Wages in Liverpool are 10% lower than the national average and **50% LOWER** than the City of London.



More than 8,900 businesses employing over **68,000 QUALIFIED PROFESSIONALS** contribute their wide range of skills to a dynamic, thriving city region.



High quality office space in Liverpool is available for around **£21 sq ft** compared to **£67 sq ft** in London.



Liverpool City Centre has over **90,000 sq ft** of Grade A office space.

Liverpool has been trading with the world for over 200 years. In that time, we've developed a wealth of experience in providing business and financial services – with specialist skills in legal, insurance and wealth management.

With a growing and skilled workforce of over 68,000 that's why Tilney Bestinvest, Pershing BNY Mellon, Rathbones, Investec and Royal Sun Alliance (RSA), invest and continue to expand in Liverpool. With over 950 law firms employing over 10,000 staff, legal services skills are strong, with a leading Law School and one of the oldest and largest regional Law Societies. This has attracted leading international law firm Hill Dickinson and also includes DWF, Brabners, Weightmans, DLA and Morecrofts.

With historic links to the maritime industry, insurance continues to be a major presence in the city and RSA continue to employ over 1,500 staff.

The city region has been quick to gain a strong reputation as a centre of excellence for outsourcing too – delivering operations for Santander, Bosch, Capita and with Tata Consulting Services one of the world's largest outsourcers establishing a major operational centre for the Home Office focusing on the secure development of business applications and IT services.

A designated Financial Services Centre of Excellence, Liverpool City Region is well positioned to support FinTech investment. Alongside smaller disruptive companies, larger institutions such as Pershing, KPMG, Santander, Barclays, Capita and Deutsche Bank have chosen Liverpool City Region to grow their technology operations.

In 2015 Liverpool was identified as the second fastest growing tech cluster in the UK. It has a highly interconnected creative and digital sector ecology, and combined with its designation as a centre of excellence for financial services creates a unique business ecology in the North of England.

RATHBONES

Rathbones Brothers Plc is one of the UK's leading providers of investment management, with over 39,000 clients, and £23.9 billion of funds under management.

"Rathbones located our main group operational functions in the city and nearly half of the employees of the group. We've been able to do this because Liverpool is such a cost effective location.

"MORE IMPORTANTLY, THE CITY ENABLES US TO ACCESS A HIGHLY QUALIFIED AND VALUABLE WORKFORCE."

Andrew Morris

Director, Rathbones



KEY FACTS

-  The **UK'S STRONGEST** games and creative media content cluster outside of the South East.
-  Home to the **UK'S MOST POWERFUL SUPERCOMPUTER** and the only UK deployment of IBM's Watson cognitive computing platform.
-  One of the world's only incubators dedicated to the development and application of sensor technologies, **SENSOR CITY**.
-  **HOME TO SHOP DIRECT**, the UK's biggest pure play retailer after Amazon.
-  **UK'S ONLY SME-LED E-HEALTH CLUSTER**, and the most concentrated deployment of health tech in Europe.

Disruptive technologies and challenging minds drive a collaborative, diverse business community. Cited as a 'digital hotspot' in recent years Liverpool City Region's digital and creative sector has experienced GVA growth of over 52%. The second largest figure amongst Northern cities.

We have one of the most successful games clusters in the UK, with multi-award winning creative media content agencies such as vTime, Laduma, Uniform and Firesprite all using years of expert knowledge to push the boundaries of immersive experience. With others delivering digital experience design solutions for the likes of Disney, Sony, BBC, Virgin Media, Nintendo, Microsoft, Google and Unilever.

The 4th Industrial Revolution - "4IR" - is transforming the way we make and do things, through VR, AR, MR, AI and other technologies. We are leading the UK with the delivery of "LCR 4.0", a dedicated £9 million programme, based on a unique public, private and academic alliance.

The STFC Hartree Centre is at the forefront of high performance computing, big data analytics and artificial intelligence, providing real-world solutions and competitive advantage to industry.

Liverpool's Film Office is set to maximise its attraction with The Littlewoods Studio initiative, providing a purpose-built film and content production resource complete with state-of-the-art sound stage and creative media campus facility. And with UNESCO City of Music status some of the UK's biggest music and music tech brands operate out of the region including Cream, Sound City, Sentric Music, Ditto and Adlib Audio.

STARSHIP

Starship is a VR/AR Innovation company focused primarily on technologies, platforms and content-creation. Founded in 2013 in Liverpool, England, the studio is bolstered by a team that has collectively conceived or created more than 100 software products in the computer games/app sector.

"Tapping into the phenomenal talent and world-leading skill set that's prevalent across the local community of digital companies in Liverpool has been of huge benefit to Starship. The ability to share insights and expertise easily across a collaborative clusters also enables our business to align interests and create new opportunities that benefit the wider business community. We have found the digital tech eco-system here to be ideal for starting and growing a pioneering and world-beating digital tech business."

"LIVERPOOL IS RIGHTLY RECOGNISED AS A LEADING ENVIRONMENT FOR DIGITAL TECH ENTREPRENEURS."

Clemens Wangerin
Managing Director, Starship



KEY FACTS

-  Wage costs in Liverpool are **10% LOWER** than the UK average.
-  Liverpool's four universities provide a valuable source of new local, **HIGHLY SKILLED SCIENTIFIC TALENT**.
-  Liverpool's research base is engaged in delivering in excess of **£470 MILLION** of research activity.
-  Floor space in Liverpool is **UP TO 36% CHEAPER** than other UK bio-science locations.
-  Home to world class pharma companies - **SEQIRUS, LILLY, ASTRA ZENECA**.

Medical research is in our blood. Liverpool and life sciences have a strong and pioneering history - with our world-leading School of Tropical Medicine and School of Life Sciences, we've trailblazed treatments that have helped save millions of lives across the globe.

Multinationals Seqirus, Lilly, Astra Zeneca, Actavis and Baxter Healthcare, as well as dynamic younger companies inject £1.7 billion per annum economy into the city, and our research base is engaged in delivering in excess of £470 million worth of research activity with partners across the globe.

We're future proofing our commitment to excellence with many new projects on the way. The £335 million investment in the Royal Liverpool Hospital will form the centre of the Liverpool Health Campus, a hub for new therapies, diagnostics, and life science technologies. The £237 million state-of-the-art Alder Hey Children's Hospital is a world leader in healthcare and research, and the University of Liverpool's £21 million BioInnovation Hub has created laboratory space and a BioBank.

The University of Liverpool is also collaborating with Unilever to create the £65 million Materials Innovation Factory, a new centre for groundbreaking product research and development, and with Liverpool John Moores University to create Sensor City, a global hub for sensor technologies.

Liverpool's outstanding life sciences sector has never been in better shape.

SEQIRUS

Seqirus, the world's no.2 influenza vaccine provider, recently commenced a £22.1 million investment for its site in Liverpool. The company, which is part of global biotherapeutics leader CSL Limited, is developing a new £15.3 million manufacturing facility to support the production of influenza vaccines at its Liverpool site. The two developments pave the way for the future expansion of product manufacturing at the Liverpool site, which plays an important role in Seqirus' global operations.

"Our investment in the new facility will enable us to bring a significant tranche of the influenza vaccine manufacturing process to the UK and in-house. It gives us the ability to ensure the highest quality production standards are maintained and will also allow us to offer new career opportunities for our talented Liverpool workforce.

"IT'S A SIGN OF OUR COMMITMENT TO THE CITY AND OUR CONFIDENCE IN LIVERPOOL AS A GOOD PLACE FOR SEQIRUS TO HOUSE A MAJOR PART OF OUR GLOBAL INFLUENZA VACCINE MANUFACTURING NETWORK."

Stephen Marlow
Senior Vice President of Manufacturing Operations for Seqirus



KEY FACTS



£4.3 BILLION invested in energy projects in the last 5 years.



Liverpool City Region is home to **1,400** low carbon businesses employing **22,000** staff.



High quality, well connected industrial space ranges from **£4.50 - £6.00 sq ft**.



Sector adds **£2 BILLION** GVA to local economy.



New Liverpool Bay wind farm supplying enough power for **230,000** homes.

Liverpool City Region is investing in a future where environmental and low carbon technologies are at the heart of how we do business - it's why this sector is amongst the fastest growing in the city.

We are leading the way in developing new energy technologies and significant advances in environmental research. Liverpool City Region has considerable strengths and market opportunities in offshore wind, solar, tidal, combined heat & power, energy from waste and sustainable transport.

As a Centre for Offshore Renewable Engineering - one of only six such centres in the UK - we sit at the heart of a region where sustainable technologies are devising smarter ways for us all to do business. Our offshore wind industry continues to present a major industry opportunity for turbine manufacturers, installers, infrastructure development and maintenance companies.

Working in partnership with major local industry (Unilever, EADS, Petrobras), the Stephenson Institute for Renewable Energy is exploring innovative new solutions to meet the world's future energy demands.

We've always looked to the city's greatest engine house the Mersey - to drive our economy. The only difference is that, now, we're directly harvesting the power of the river, the tides and our climate in smarter, more sustainable ways.

DONG ENERGY

DONG Energy, the global leader in offshore wind, will build a new operations and maintenance (O&M) facility in Liverpool City Region to serve its two offshore wind farms in the area. The facility will consist of a new office and warehouse building on a disused site. It will serve the existing Burbo Bank offshore wind farm and the new Burbo Bank Extension offshore wind farm, currently under construction. Burbo Bank has been operational since 2007 and has a total capacity of 90 megawatts (MW). Burbo Bank Extension is currently under construction and is expected to be fully operational in 2017. It will have a capacity of 258 MW, generating enough electricity to power approximately 230,000 homes.

As part of the development, DONG Energy has committed to carry out work on the river promenade adjacent to the site which will improve the public amenity.

"I am delighted to announce that we are building this fantastic new facility in Liverpool City Region to serve our offshore wind farms in the area. DONG Energy is committed to investing in the UK and we are very proud to be playing an important role in the redevelopment of this part of Kings Wharf."

"THE SITE OFFERS EXCELLENT OFFSHORE ACCESS AND FLEXIBILITY, WHICH IS EXACTLY WHAT WE NEED TO EFFICIENTLY OPERATE AND MAINTAIN OUR WIND FARMS."

Brent Cheshire
DONG Energy's UK Country Chairman



KEY FACTS



28,000 people employed in the maritime, airport and related sectors.



A £400 MILLION INVESTMENT in Post-Panamax facilities is underway and will add c750,000 TEU capacity as well as increasing vessel size.



Land and property costs are lower compared to Essex or Southampton, with warehousing at **£4.50 - £6.00 sq ft**.



4 OF THE WORLD'S TOP 6 shipping companies have a base in the city.



60% OF THE UK container market is closer to Liverpool than the South of England.

Shipping made us. And it continues to shape the city's future, with a £1 billion investment in the city's ports, airport, road, rail and logistics in the next decade.

Peel Ports Liverpool is the UK's highest volume west coast port. And it's getting busier. The recently completed £400 million Liverpool2 deep water terminal at Peel Ports Liverpool is ready to welcome the world's biggest ships: the 'Post-Panamax' container vessels. Liverpool2 will open up faster supply chain transit for at least 60% of the existing UK container market.

The port is connected to a number of port centric logistics hubs along the Green Water highway between Liverpool and Manchester which will reduce cost, carbon and congestion for businesses serving the UK and Ireland.

We're already home to some of the largest shipping lines in the world - including Maersk, CMA CGM, Hapag-Lloyd, and MSC - and can provide every shipping, engineering, warehousing and commercial support service, with a 28,000 strong workforce employed in the large and diverse maritime industry here.

And we're investing in the future too - with a University Technical College in the city region devoted entirely to maritime skills, and a new £20 million Maritime Knowledge Hub delivering skills, R&D, knowledge transfer and business growth within the marine supply chain.

Liverpool's in the strongest position ever to be one of Europe's best-connected port cities.

BIBBY LINE

Bibby Line is a privately-owned business services group with its roots in shipping. They have built a strong reputation over 200 years for professionalism, integrity and quality. Bibby Line aims to grow, diversify and further strengthen its position in its chosen markets.

"WE STARTED HERE BECAUSE MY ANCESTORS CHOSE TO LIVE HERE, BUT WE STAYED HERE BECAUSE WE REALLY WOULDN'T WANT TO BE ANYWHERE ELSE."

"These days, an international shipping line could have its headquarters anywhere in the world. But our shipping business chose to stay based in the city. Liverpool's got great connectivity, a well qualified, skilled talent pool, and loyal, hard working labour force."

"We've worked hard to create a cluster hub for maritime industry, to stimulate trade between different businesses and generate a centre of excellence, all of which makes it easier to recruit the very best people at a senior level.

"With the Liverpool2 container port in development, that can only mean that Liverpool's shipping trade has a very strong future. And that's great for us."

Sir Michael Bibby
Chairman, Bibby Line

PROPERTY & LAND





KEY FACTS

£7.5 BILLION of capital projects delivered in the last decade.



3 ENTERPRISE ZONES, including a University Enterprise Zone.



Projects with a development value of **£1.89 BILLION** on site.



£7 BILLION of projects due to be delivered in the next decade.



£10 BILLION investment in Liverpool and Wirral Waters mixed use waterfront projects.

QUALITY OF LIFE





KEY FACTS

Population of **1.5 MILLION** with a **£29 BILLION** economy.



One of the most **COST EFFECTIVE** cities to live in the UK.



Voted **2ND HAPPIEST** UK city to work by The Guardian.



A **TOP 5** UK retail centre. Including Liverpool ONE which is a European leading retail and leisure destination.



Minutes from the **BEACH** and an hour from the **MOUNTAINS**.

The shape of our city has been transformed over the past decade. Multi-million pound regeneration projects have seen the city become a backdrop for new and ambitious leisure, commercial and residential developments.

En-route, we’ve fine-tuned a portfolio of flexible, affordable and desirable new property sites and created the perfect environment to build exciting new schemes in the heart of our city.

Liverpool has a proven record of delivering complex developments - such as the 1.5 million sq ft shopping and leisure destination of Liverpool ONE, and the game-changing ACC Liverpool. This is now complemented by the £40 million Exhibition Centre Liverpool that opened early 2016, together with the Pullman Hotel.

Over the last decade, the city has attracted over £7.55 billion of physical investment, reshaping the city for good.

Liverpool’s three Enterprise Zones, all backed by central Government support, offer fast-paced incubation hubs for ambitious businesses, development land for manufacturing and industrial uses, superb working environments and easy access to Liverpool’s well-connected road, rail and sea transport routes.

A historic trading centre, Liverpool’s creating the right environment for future growth.

COLLIERS

Colliers International is a global commercial real estate services organisation with more than 482 offices in 62 countries.

“Colliers has represented clients on several high profile projects in Liverpool.”

“WE ARE IMMENSELY IMPRESSED BY THE ENERGY AND CAN-DO ATTITUDE OF TEAM LIVERPOOL.”

This united front of support gives us, and our clients, great confidence in the long-term security of investment in the city.”

Andy Delaney
Director of Development Consulting and Agency, Colliers

Liverpool is famed across the globe as a true culture capital. It is one of the most visited cities in the UK, a top 5 retail centre, a leading centre for business tourism and recently named in the Rough Guide’s top ten global cities to visit. It’s this internationally renowned quality of life that makes it such an attractive place to attract and retain your future workforce.

CULTURAL ATTRACTIONS

Home to Tate Liverpool and the Walker Art Gallery; the city hosts major touring exhibitions from artists such as Picasso, Magritte, Warhol, Monet and Van Gogh alongside the Liverpool Biennial Europe’s second biggest contemporary visual arts event.

The award-winning Royal Liverpool Philharmonic Orchestra is the classical counterpoint to the city’s many buzzing contemporary music venues and the visually stunning Echo Arena which hosts world-leading performers.

Liverpool has one of the world’s great waterfronts and is home to a UNESCO World Heritage Site.

WORLD-CLASS SPORT AND LEISURE

Liverpool City Region has a sporting reputation to rival any place in the world. It is home to world-famous football teams, The Grand National - the world’s greatest steeplechase, and four of our ‘Golf Coast’ championship golf courses have been named in Golf World’s Top 200 courses in the World and regularly host British Open Championships.

Open space is abundant, with 135km of coastline that includes woodlands, nature reserves and promenades, as well as 60km of beach - more than any other urban area in Britain. Public gardens and parks are scattered across Liverpool City Region.

Liverpool is within 90 minutes drive of three of the country’s outstanding National Parks: Snowdonia, The Peak District and The Lake District.

The city attracts people from far and wide to experience its buzz and excitement. Liverpool’s unique sense of style is reflected in its vast array of stores and boutiques. With its myriad of bars, live music, excellent restaurants and pavement cafés, the city is widely considered to offer the best night out in the UK, if not the world. Liverpool’s nightlife is listed number 3 in the Rough Guide’s list of ‘50 things to do before you die’.

FEELING AT HOME

People feel at home in Liverpool. Many people enjoy the experience of living in the city centre and on its magnificent waterfront with a variety of housing to suit all tastes from stylish riverside apartments to magnificent Georgian and Victorian architecture.

Outside the city, there are quality living choices from thatched cottages to leafy green suburbs and coastal retreats, all within easy commuting distance.

EDUCATION CREATES OPPORTUNITY

The city region’s universities and institutions are internationally recognised, with 81% of research rated 4* (world-class) and 3* (internationally excellent). Students are taught by leading researchers allowing them to develop the skills they need to excel in the workplace. It is a unique place to learn and much of the success is a result of a strong and established collaboration with commercial businesses.

CONNECTIVITY

Liverpool City Region's connectivity and central location is a key strength. We're at the heart of the UK's second largest regional economy, meaning wherever your customers, or the rest of your operation is based, Liverpool City Region is easy to reach.

We are connected by direct rail services to core cities across the UK, with London just two hours away and services every hour. By road, the central belt of Scotland, Newcastle and Bristol are all within 4 hour's drive time.

For international connections there is a choice of both Liverpool John Lennon Airport and Manchester International Airports which are both within a 45 minute drive time.

LIVERPOOL JOHN LENNON AIRPORT (LJLA)

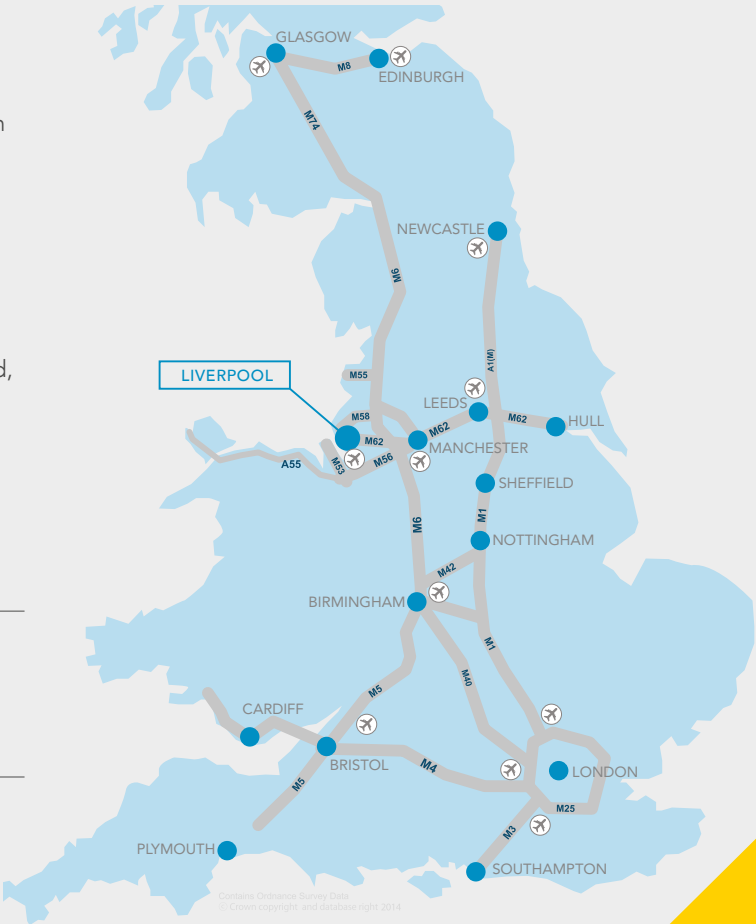
Located within 15 minutes of Liverpool City Centre, LJLA transports 4.5 million passengers annually to 60 destinations.

MANCHESTER INTERNATIONAL AIRPORT

Located within 45 minutes of Liverpool City Centre, Manchester airport transports over 23 million passengers annually to 200 destinations.

DAILY TRAIN SERVICES

- London (27 services) 2hrs
- Edinburgh (15) 3hrs 24mins
- Birmingham (48) 1hr 26mins



INCENTIVES

GRANT FUNDING

There are a variety of grant funds available to businesses who are looking to invest or expand in Liverpool City Region. The funding is delivered locally ensuring rapid appraisal, rapid decisions and rapid results. It's the way we do business here.

LOAN & EQUITY FUNDS

Invest Liverpool can connect you with a wide variety of funding options available in the city region. Whether it be loan, investment, crowdfunding, invoice finance or asset finance, whatever your needs may be, we can introduce you to the right funding products for your business.

RECRUITMENT & SKILLS INCENTIVES

Investing in skills is essential to any company's future growth. Grants are available to support the recruitment of apprentices. We can offer invaluable business support for recruitment and training through our 'Liverpool in Work' programme. The scheme provides a dedicated account manager for your company, offering a wide range of recruitment services free of charge.

PROPERTY INCENTIVES

Liverpool offers some of the highest levels of property incentives in the UK, with potential for significant rent free periods on office accommodation. Combine this with some of the lowest real estate prices, and Liverpool offers an extremely cost effective solution.

LIVERPOOL IN LONDON

Liverpool in London is a base for Liverpool City Region businesses who want to benefit from a London location to network and secure business opportunities, without the significant cost associated with a London address. Liverpool in London membership puts you and your business at the heart of the capital, helping you to secure deals in this vast marketplace.

Membership provides you with a London address, virtual office service, hot desk, access to meeting and event spaces, membership to the London Chamber of Commerce & Industry, discounted accommodation rates and more.

We have a team of business location experts from across Liverpool City Region that can assist you with your next project.

We can provide detailed research on markets, sectors and workforce demographics. We can put you in touch with the right contacts at industry networks and partner organisations. We're happy to introduce you to potential partners at our world-class universities and our existing businesses. We can help you to identify all the available support to help your expansion and show you a wider range of sites, premises and development opportunities.

For further information and support email: investliverpool@liverpool.gov.uk.

We look forward to working on your plans with you.

investliverpool.com

**INVEST
LIVERPOOL**
ADVANCING THE CITY REGION

